

Write your name here

Surname

Other names

Pearson
Edexcel GCE

Centre Number

--	--	--	--	--

Candidate Number

--	--	--	--

Core Mathematics C1

Advanced Subsidiary



Wednesday 17 May 2017 – Morning
Time: 1 hour 30 minutes

Paper Reference

6663/01

You must have:

Mathematical Formulae and Statistical Tables (Pink)

Total Marks

--

Calculators may NOT be used in this examination.

Instructions

- Use **black** ink or ball-point pen.
- If pencil is used for diagrams/sketches/graphs it must be dark (HB or B). Coloured pencils and highlighter pens must not be used.
- **Fill in the boxes** at the top of this page with your name, centre number and candidate number.
- Answer **all** questions and ensure that your answers to parts of questions are clearly labelled.
- Answer the questions in the spaces provided
– *there may be more space than you need.*
- You should show sufficient working to make your methods clear. Answers without working may not gain full credit.

Information

- The total mark for this paper is 75.
- The marks for **each** question are shown in brackets
– *use this as a guide as to how much time to spend on each question.*

Advice

- Read each question carefully before you start to answer it.
- Try to answer every question.
- Check your answers if you have time at the end.

Turn over ►

P48760A

©2017 Pearson Education Ltd.

1/1/1/1/



Pearson

9. (a) On separate axes sketch the graphs of

(i) $y = -3x + c$, where c is a positive constant,

(ii) $y = \frac{1}{x} + 5$

On each sketch show the coordinates of any point at which the graph crosses the y -axis and the equation of any horizontal asymptote.

(4)

Given that $y = -3x + c$, where c is a positive constant, meets the curve $y = \frac{1}{x} + 5$ at two distinct points,

(b) show that $(5 - c)^2 > 12$

(3)

(c) Hence find the range of possible values for c .

(4)

DO NOT WRITE IN THIS AREA

DO NOT WRITE IN THIS AREA

DO NOT WRITE IN THIS AREA



10.

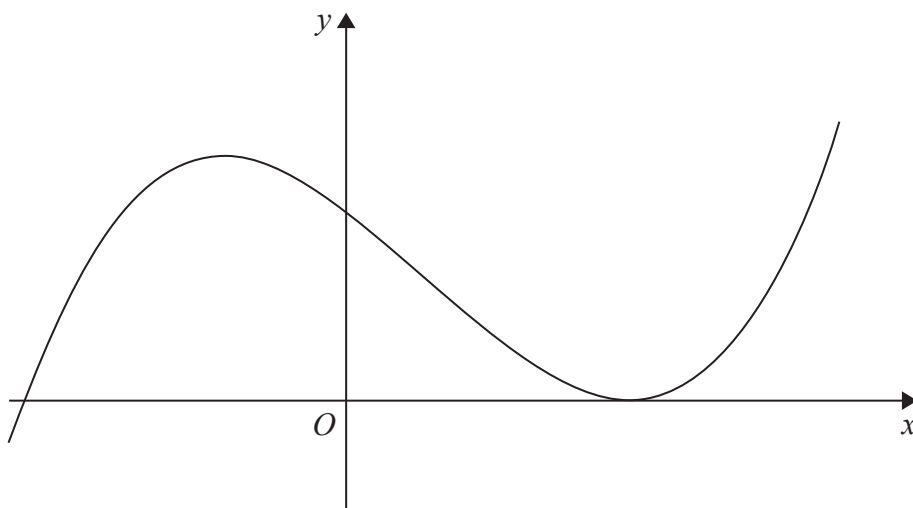


Figure 2

Figure 2 shows a sketch of part of the curve $y = f(x)$, $x \in \mathbb{R}$, where

$$f(x) = (2x - 5)^2(x + 3)$$

(a) Given that

- (i) the curve with equation $y = f(x) - k$, $x \in \mathbb{R}$, passes through the origin, find the value of the constant k ,
- (ii) the curve with equation $y = f(x + c)$, $x \in \mathbb{R}$, has a minimum point at the origin, find the value of the constant c .

(3)

(b) Show that $f'(x) = 12x^2 - 16x - 35$

(3)

Points A and B are distinct points that lie on the curve $y = f(x)$.

The gradient of the curve at A is equal to the gradient of the curve at B .

Given that point A has x coordinate 3

(c) find the x coordinate of point B .

(5)

DO NOT WRITE IN THIS AREA

DO NOT WRITE IN THIS AREA

DO NOT WRITE IN THIS AREA



